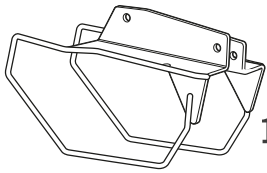


SHAD

YAMAHA MT 10 '16 SIDE BAG HOLDER YOMT16SE



1 262018 x1 →
262019 x1 ←



2 260648 x2
Ø16 Ø9 x5



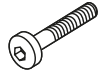
3 303045 x4
Ø8



4 304036 x2
M8 x 45 Din 7380



5 260523 x2
Ø16 Ø9 x25



6 304170 x2
M8 x 60 Din 7380

! WARNING!

(GB)

Do not fully tighten the screws until it is ensured that the KIT is correctly attached and aligned.

(E)

No apretar los tornillos del todo hasta asegurarse que el KIT está correctamente colocado y alineado.

(D)

Ziehen Sie die Schrauben nicht ganz fest, bevor Sie sich nicht vergewissert haben, daß der Bausatz korrekt eingestellt und ausgerichtet ist.

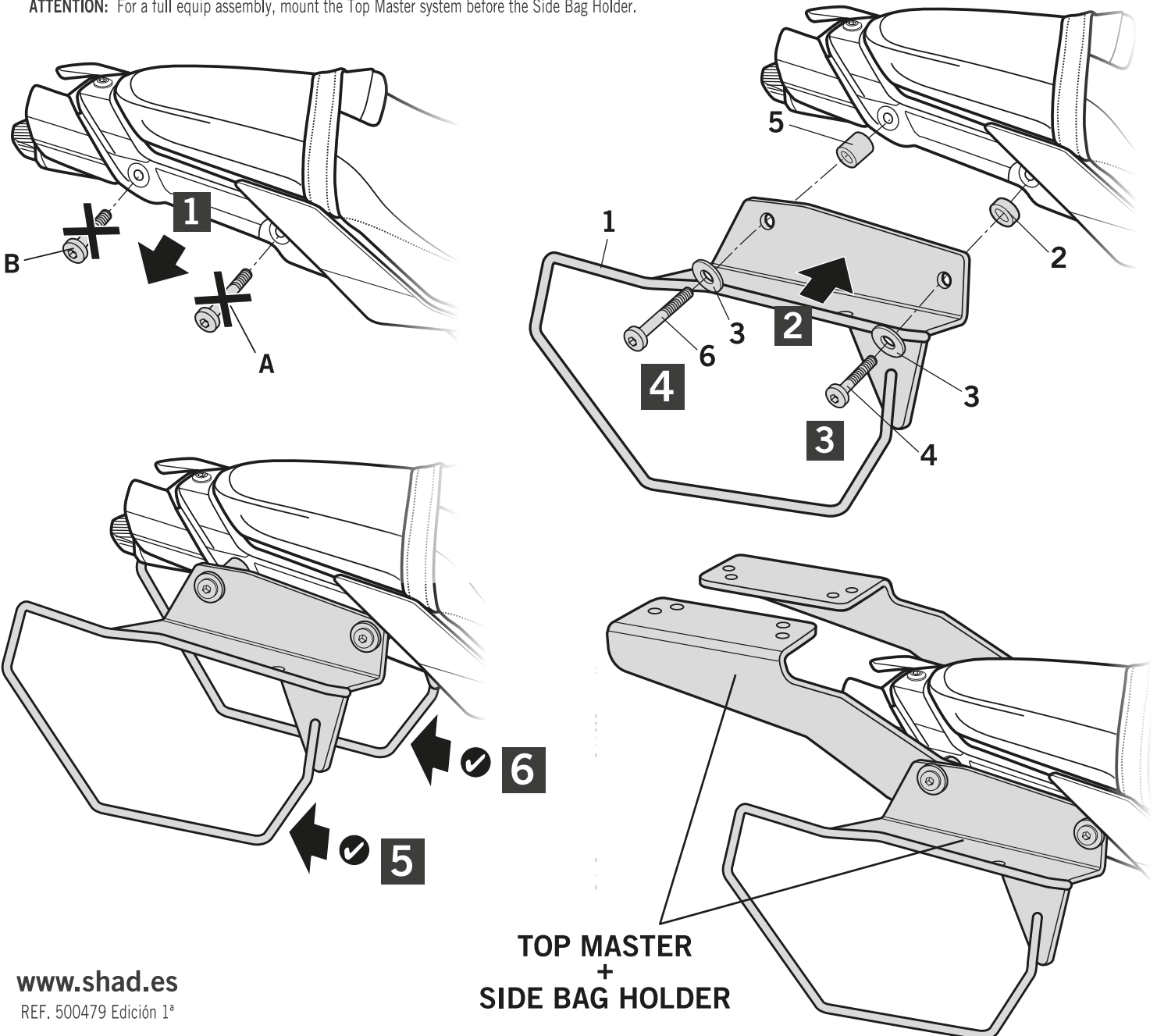
(I)

Non stringere del tutto le viti fin tanto non si è sicuri che il kit è collocato correttamente e allineato.

(F)

Ne pas serrer les vis avant d'être sûr que le KIT est correctement monté et ajusté.

ATTENTION: For a full equip assembly, mount the Top Master system before the Side Bag Holder.



www.shad.es

REF. 500479 Edición 1ª

TOP MASTER
+
SIDE BAG HOLDER

IMPORTANT: Based on European models. For compatibility with models in other continents, check www.shad.es